

Bridge Over Troubled Water

Simon & Garfunkel

Piano intro

E B A B/A B^b° E/B E7 C#7 A Am6

Musical notation for the piano intro, measures 1-4. The staff shows chords: E, B, A, B/A, B^b°, E/B, E7, C#7, A, Am6.

E E7 A/E E E7 A/E

Musical notation for the piano intro, measures 5-8. The staff shows chords: E, E7, A/E, E, E7, A/E.

VERSE

E A/E E (D/E) A D A

Musical notation for the verse, measures 9-12. The staff shows chords: E, A/E, E, (D/E), A, D, A.

E Emaj7 F#m E A E A E/G# B sus/F#

Musical notation for the verse, measures 13-16. The staff shows chords: E, Emaj7, F#m, E, A, E, A, E/G#, B sus/F#.

E B/D# C#m11 B B7 C#m7 B/D# E Emaj7

Musical notation for the verse, measures 17-20. The staff shows chords: E, B/D#, C#m11, B, B7, C#m7, B/D#, E, Emaj7.

E7 F#m E7/G# A F#7 B E B A B/A A#°

Musical notation for the verse, measures 21-24. The staff shows chords: E7, F#m, E7/G#, A, F#7, B, E, B, A, B/A, A#°.

E/B C#sus C# A G#/C C#m E B A B/A A#°

Musical notation for the verse, measures 25-28. The staff shows chords: E/B, C#sus, C#, A, G#/C, C#m, E, B, A, B/A, A#°.

E/B C#sus C# A C#° E E7


Musical notation for the verse, measures 29-31. The staff shows chords: E/B, C#sus, C#, A, C#°, E, E7.

A/E E E7 A/E To verse


Musical notation for the verse, measures 32-35. The staff shows chords: A/E, E, E7, A/E, To verse.

Bridge Over Troubled Water


35




41




45




49




53



57




61




65



69



73

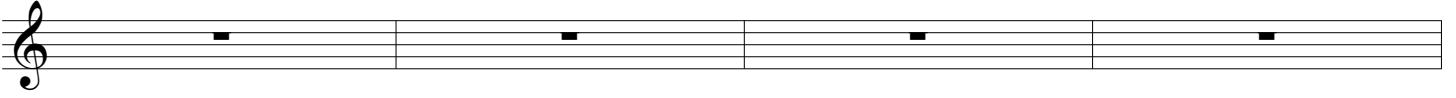


Bridge Over Troubled Water

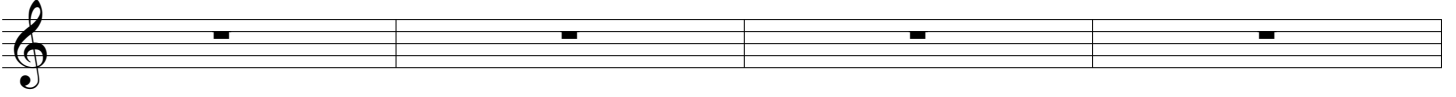
77



81



85



89



93

